

CONCRETE DESIGN GUIDE



BRICKFORM

Table of Contents

Sample Color Combinations.....	
4 - 5	
Seamless Texture Skins	
6 - 11	
Stone Textures.....	
12 - 23	

Final appearance and color may vary from these photos. This document is only a guide and is not intended to replace practical mock-ups or samples. Work with a contractor to determine the best color and texture/finish combinations. Many factors affect appearance, so representative jobsite samples/mock-ups are recommended prior to construction. **Solomon Colors/Brickform accepts no responsibility for color matching or misprints.**



Large Ashlar Cut Slate
Stone Gray Color Hardener / Medium Gray Antique Release

THE BRICKFORM Stamped Concrete System

Stamped concrete is the foundational decorative concrete system. Brickform is the leading name in stamped concrete, with half a century of experience in manufacturing professional grade materials for the concrete contractor.

Texture – Surface textures are created by patterned stamps and seamless texture skins.

Color – Integral color is mixed in the concrete truck and will create color throughout the concrete. Color Hardener is topically applied and allows for some freedom to color the concrete with bold or pastel colors that cannot be achieved with integrally colored concrete because of its gray base. Antiquing colors add definition and variation. Stains are also available to color your new or existing concrete projects. They may be used as accent colors to create a one-of-a-kind final look.

Sealer – Many different sealers are available that provide various levels of color enhancement, surface sheen and protections for your concrete hardscape.

Maintenance & Restoration – Stamped concrete should be periodically cleaned using a broom, water, and mild detergent such as Neutra Clean. Generally, concrete should also be resealed using the same sealer every two to three years, or as conditions dictate.



Ashlar Cut Slate
Solomon Integral Color Doeskin / Light Gray Antique Release / ARTesian Stain



Cedar Wood
Solomon Integral Color Ginger / Desert Tan Antique Release

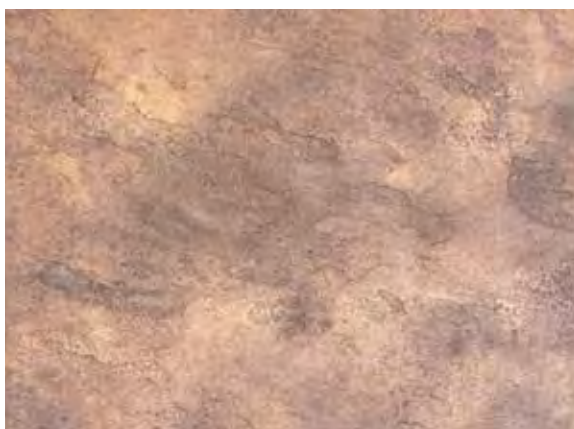
When **CHOOSING COLORS** for stamped concrete, it is recommended to compliment your existing hardscape versus trying to match an existing color. The sample pictures below are to help you identify approximate color ranges for your base color and your release. Look at the samples below and identify which of the combinations of base color (Color Hardener or Integral Color) and release agent



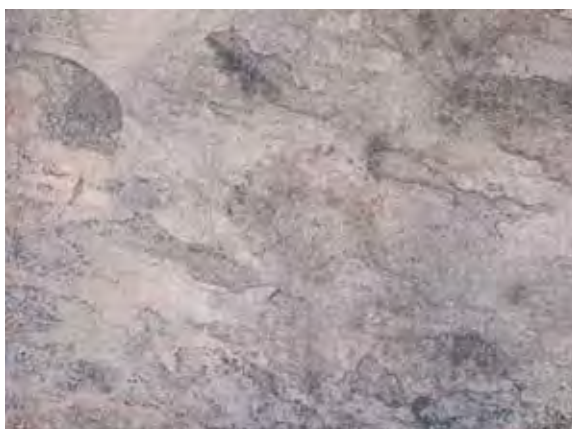
Blue Stone Texture Skin
Brickform Integral Color Chamois / Desert Tan Antique Release



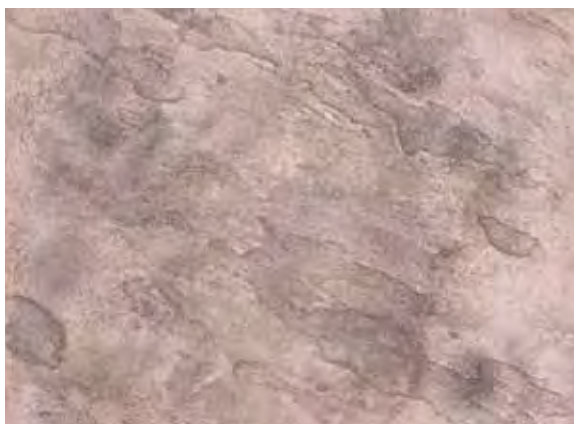
Blue Stone Texture Skin
Brickform Integral Color Slate / Dark Gray Antique Release



Blue Stone Texture Skin
Brickform Integral Color Leather / Nutmeg Antique Release



Blue Stone Texture Skin
Brickform Integral Color Oak / Medium Gray Antique Release



Blue Stone Texture Skin
Brickform Integral Color Deer Valley / Walnut Antique Release



Blue Stone Texture Skin
Brickform Integral Color Fog / Medium Gray Antique Release

are similar to what you are looking for. Then on the following pages, find the pattern you like and refer back to these pages to finalize your color selection. Always remember, these are pictures of samples. To ensure the true coloration, request a jobsite sample from your contractor prior to installation.



Paladiano Stones of Athens
Sandstone Color Hardener / Nutmeg Antique Release



Paladiano Stones of Athens
Sun Buff Color Hardener / Chestnut Antique Release



Paladiano Stones of Athens
French Gray Color Hardener / Dark Gray Antique Release



Paladiano Stones of Athens
Oyster White Color Hardener / Nutmeg Antique Release



Paladiano Stones of Athens
Smokey Blue Color Hardener / Dark Gray Antique Release



Paladiano Stones of Athens
Cappuccino Color Hardener / Sunbaked Clay Antique Release

SEAMLESS TEXTURE SKINS are feathered edge stamping tools that can be rotated and overlapped for infinite texture variety. Texture skins can be used to touch up and supplement patterned textures, or they can be used as the primary tool for a striking, continuous texture.



Rough Stone
Cream Beige Color Hardener / Desert Tan Antique Release



Rough Stone
Cappuccino Color Hardener / Desert Tan Antique Release



Rough Stone
Solomon Integral Color (Custom) / Nutmeg Antique Release



Rough Stone

Solomon Integral Color Ginger / Smokey Beige Antique Release



Rough Stone

Sandy Buff Color Hardener / Nutmeg Antique Release



Rough Stone

Stone Gray Color Hardener / Medium Gray Antique Release



Roman Slate

Solomon Integral Color Bamboo / Dusty Rose Antique Release



Roman Slate

Solomon Integral Color Ginger / Pecos Sand Antique Release
Border: Mission Brown Acid Stain

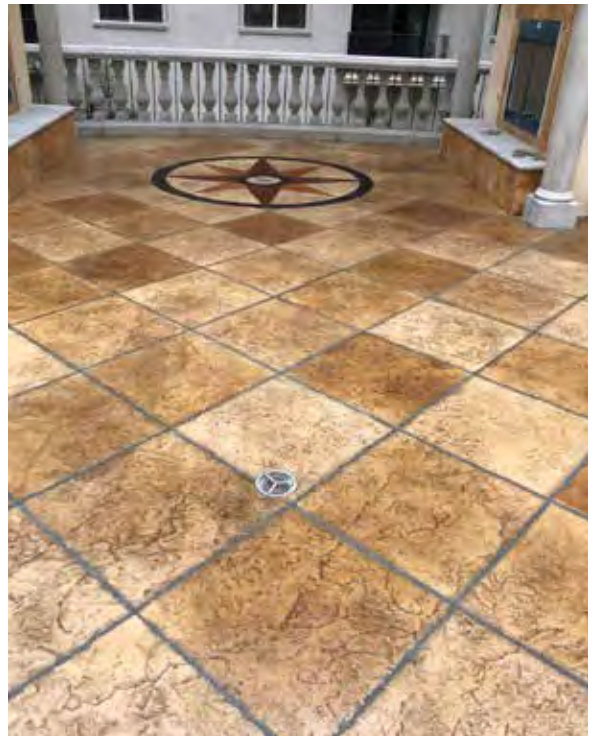


Roman Slate

Adobe Buff Color Hardener / Terra Cotta Antique Release



Roman Slate
Solomon Integral Color Ceramic, Liquid Release



Roman Slate / Saw-Cuts
Cappuccino Color Hardener / Desert Tan Antique Release / Acid Stain (diluted)



Roman Slate
Solomon Integral Color Ceramic, Liquid Release



Heavy Stone Texture Skin
Stone Gray Color Hardener (border) / Light Gray Antique Release



Heavy Stone
Blush-Tone Acid Stain Mahogany / Antique-It Walnut



Sierra Seamless Texture Skin

Solomon Integral Color Canvas / Desert Tan Antique Release



Desert Slate

Solomon Integral Color Desert Tan / Terra Cotta Antique Release



Sierra Seamless

Sunbaked Clay Color Hardener / Autumn Brown Antique Rel.
Border - Integral Color Chamois / Lt Gray Antique Release

STONE is a natural material with inherent beauty. For centuries, it has been the standard paving and building material. While its rustic appeal still holds in modern times, the expense and limitations are a deterrent. Stone textures for stamped concrete reduce the labor costs and give more creative control and uniformity without sacrificing visual appeal.



European Fan
Adobe Buff Color Hardener (Saddle Brown border) / Light Gray Antique Release



European Fan
Cappuccino Color Hardener / Desert Tan Antique Release



European Fan
Ash White Color Hardener / Cappuccino Antique Release



European Fan
Sunbaked Clay Color Hardener / Terra Cotta Antique Release (excludes border)



London Cobble
Sunbaked Clay Color Hardener / Dark Gray Antique Release



London Cobble
Brickform Integral Color Sienna / Walnut Antique Release



London Cobble
Brick Red Color Hardener / Dark Gray Antique Release



Random Stone

Dover Blue Color Hardener / Light Gray Antique Release



Random Stone

Stone Gray Color Hardener / Light Gray Antique Release



Random Stone

Sunbaked Clay Color Hardener / Walnut Antique Release



Lincoln Trail Large Random

Solomon Integral Color Canvas / Nutmeg, White Antique Release



Lincoln Trail Large Random

Solomon Integral Color Ginger / Medium Gray Antique Release / ARTesian Stain



Castle Stone

Solomon Integral Color Sedona / Autumn Brown Antique Release



Castle Stone

Cream Beige Color Hardener / Buff Tan Antique Release



Cobblestone Radius

Solomon Integral Color Rawhide / Medium Gray Antique Release



Cobblestone Radius

Quarry Red Color Hardener / Dark Gray Antique Release



Lotus Blossom Medallion, Cobblestone Radius Tool B

Golden Sandstone Color Hardener / Nutmeg Antique Release / ARTesian Stain



Paladiano Yorkshire Cobble

Stone Gray Color Hardener / Light Gray Antique Release



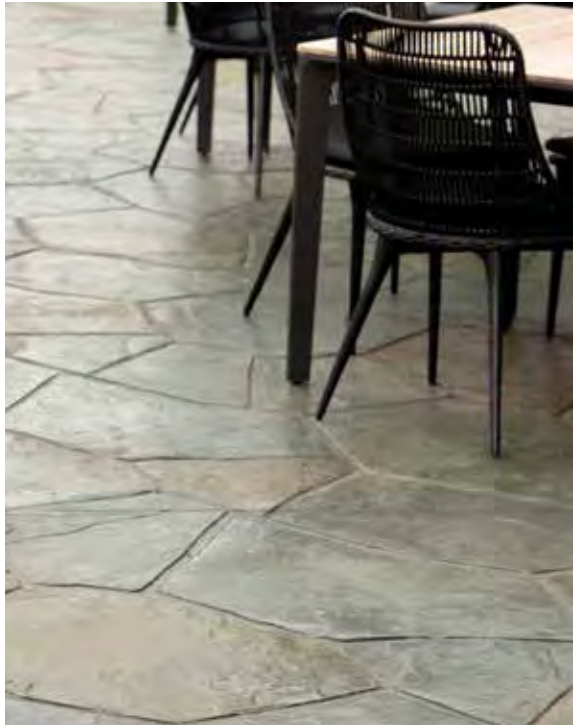
Paladiano Pavimento of Paris

Medium Gray Color Hardener / Light Gray Antique Release / ARTesian Stain



Flagstone

Golden Sandstone Color Hardener / Buff Tan Antique Release



Flagstone

Dover Blue Color Hardener / Liquid Release / ARTesian Stain (diluted)



Flagstone

Cream Beige, Terra Cotta Color Hardener / Medium Gray Antique Release



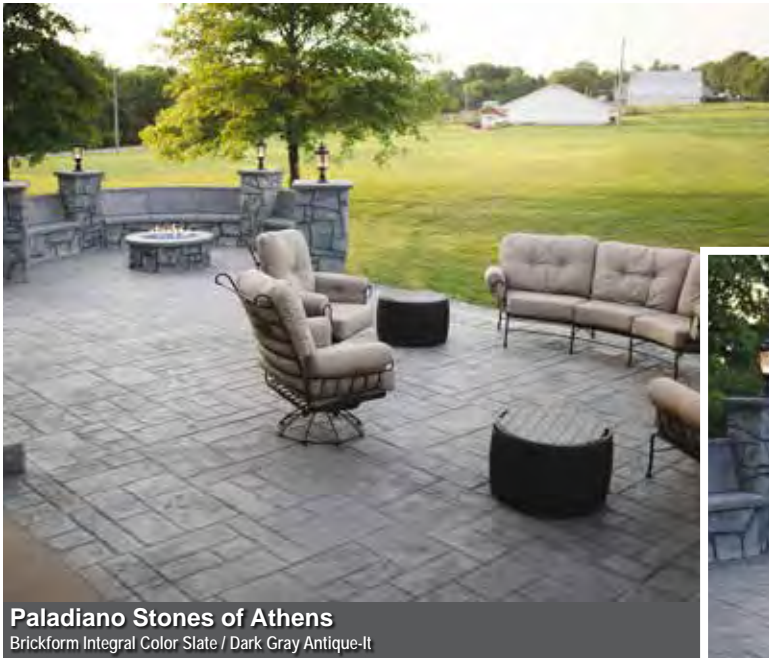
Verona Stone

Adobe Buff Color Hardener/ Smokey Beige Antique Release



Verona Stone

Stone Gray Color Hardener / Light Gray Antique Release





Paladiano Stones of Athens
 Adobe Buff Color Hardener / Medium Gray Antique Release



Paladiano Stones of Athens
 French Gray Color Hardener / Dark Gray Antique Release

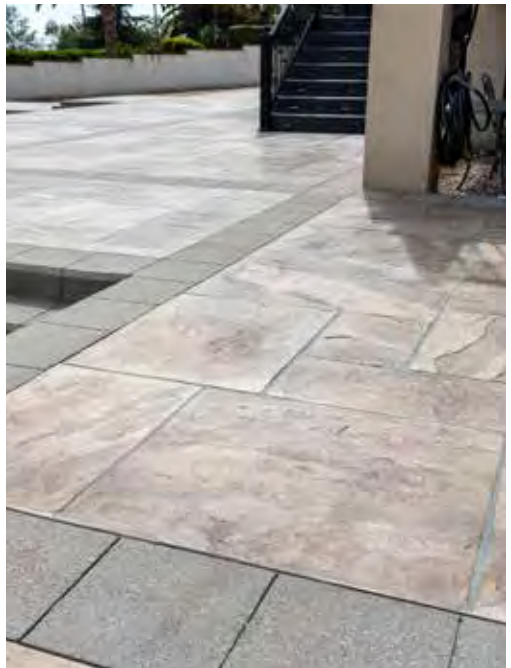


Paladiano Stones of Athens
 Sandstone Color Hardener / Nutmeg Antique Release



Yorkstone Set

Ash White Color Hardener / Sun Buff Antique Release



Yorkstone / Surface Deactivator

Ash White Color Hardener / Desert Tan Antique Release



Rough Cut Ashlar

Solomon Integral Color Driftwood / Medium Gray Antique Release



Rough Cut Ashlar

Solomon Integral Color Thyme / Dark Gray Antique Release



Paladiano Hammered Sofia Stone
Solomon Integral Color Marigold / Autumn Brown Antique-It



Pennsylvania Cobble
Autumn Brown Color Hardener / Dark Gray Antique Release



Tuscany Stone
Ash White Color Hardener / Cappuccino Antique Release

SLATE patterns provide a natural texture and are an excellent option for indoor surfaces and outdoor hardscapes. Achieve the appearance of slate pavers without the limitations of high labor costs or fragile building materials.



36" Ashlar Cut Slate
Cappuccino Color Hardener / Desert Tan Antique Release



36" Ashlar Cut Slate
Sun Buff Color Hardener / Medium Gray Antique Release



36" Ashlar Cut Slate
Brickform Integral Color Harvest Gold / Pecos Sand Antique Release



Large Ashlar Cut Slate
Desert Tan Color Hardener / Buff Tan Antique Release / ARTesian Stains



Large Ashlar Cut Slate
Ash White Color Hardener / Light Gray Antique Release



Large Ashlar Cut Slate
Adobe Buff Color Hardener / Smokey Beige Antique Release



Large Ashlar Cut Slate
Adobe Buff Color Hardener / Medium Gray Antique Release



Large Ashlar Cut Slate
Solomon Integral Color Marigold / Buff Tan Antique Release



Ashlar Cut Slate

Cappuccino Color Hardener / Autumn Brown Antique Release



Ashlar Cut Slate / Yorkstone

Adobe Buff Color Hardener / Sun Buff Antique Release / ARTesian Stain Magnet



Ashlar Cut Slate

Stone Gray Color Hardener / Medium Gray Antique Release



Ashlar Cut Slate

Solomon Integral Color Doeskin / Light Gray Antique Release / ARTesian Stain



Ashlar Cut Slate

Tile Red Color Hardener / Walnut Antique Release



Ashlar Cut Slate / Yorkstone

Solomon Integral Color Ceramic / Smokey Beige Antique Release



Regal Ashlar / Sierra Seamless
Stone Gray Color Hardener / Dark Gray Antique Release



Regal Ashlar
Light Gray Color Hardener / Medium Gray Antique Release



American Ashlar
Solomon Integral Color Doeskin / Desert Tan Antique Release



Herringbone Slate

Solomon Integral Color Cedar / Medium Gray Antique Release



Running Bond Slate

Solomon Integral Color Prairie Tan / Copper Brown Antique Release
Border: ARTesian Stain



12 x 12 Slate

Cream Beige Color Hardener / Desert Tan Antique Release



Paladiano Fractured Cyprus Slate

Golden Sandstone Color Hardener / Light Gray Antique Release / ARTesian Stain



Grand Ashlar

Golden Sandstone Color Hardener / Desert Tan Antique Release

WOOD patterns have endless possibilities and are excellent for creating durable surfaces, both interior and exterior. Patterns range from rustic to contemporary and mimic a multitude of natural wood surfaces.



3" Cedar Wood Flooring
Sandy Buff Color Hardener / Walnut Antique Release



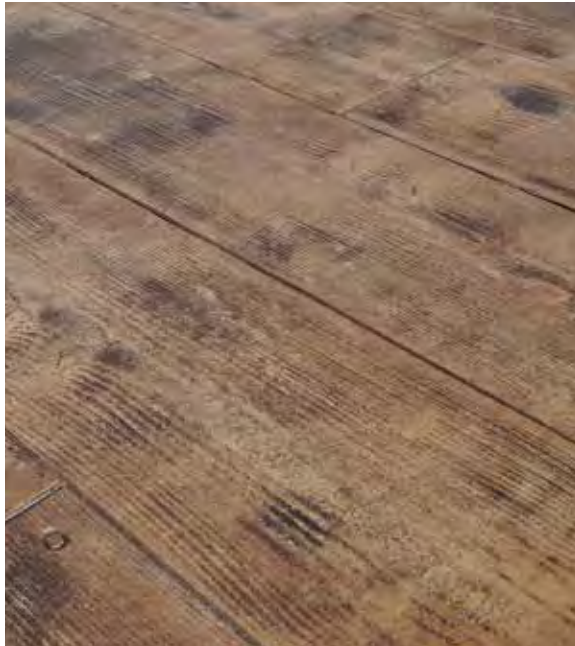
Classic Wood
Solomon Integral Color Rawhide / Medium Gray Antique Release



Classic Wood
Solomon Integral Color Canvas / Chestnut Antique Release



Classic Wood with Nailheads
Cappuccino Color Hardener / Walnut Antique Release /
Aged Walnut ARTesian Stain



Cedar Wood Plank
Cappuccino Color Hardener / Chestnut Antique Release



8" Weathered Wood
Solomon Integral Color Ceramic / Medium Gray Antique Release



Classic Wood
Adobe Buff Color Hardener / Desert Tan Antique Release

BRICK is a classic and attractive finish for interior and exterior floors alike. Whether you are replacing a residential sidewalk or a commercial walkway, Stamped Concrete Brick patterns are used to mimic the natural appearance of brick pavers, while offering the longevity and durability of concrete.



Herringbone Used Brick
Solomon Integral Color Sedona / Light Gray Antique Release /
ARTesian Stain / SM Professional Grade Grout Lines



Herringbone New Brick
Oyster White Color Hardener / Nutmeg Antique Release



Basket Weave New Brick
Solomon Integral Color Terra Cotta / Medium Gray Release



Herringbone New Brick / 4x8 New Brick Border
Sunbaked Clay Color Hardener / Chestnut Antique Release

Brickform would like to thank the following
for their photo submissions:

Concretec Ecuador
Creative Concrete Concepts
Creswell Concrete
Decorative Concrete Finishes
Designs in Concrete
Edwards Concrete
Eilar Construction
FRSR Landscape
General Concrete LTD
Guzik Concrete Services
Hoosier Concrete Construction
Hotte Concrete Construction
Hudecek Cement
KP Construction
Laflamme Concrete
Lamberson Conctruction
Lutz Concrete Solutions LLC
Patterned Concrete of Cincinnati
Power Concrete
Power Concrete & Construction
Pro-Tech Custom Concrete
RC Concrete
Shaw & Sons Concrete
Smith Pools
Symbolic Concrete Design
Vandenburg Concrete

Connect with Brickform on social media to see more project inspiration.



Final appearance and color may vary from these photos. This document is only a guide and is not intended to replace practical mock-ups or samples. Work with a contractor to determine the best color and texture/finish combinations. Many factors affect appearance, so representative jobsite samples/mock-ups are recommended prior to construction. Solomon Colors/Brickform accepts no responsibility for color matching or misprints.



BRICKFORM

Brickform, A Division of Solomon Colors, Inc.